

DEA No. RA0571996
FL License # CMTL-0003
CLIA No. 10D1094068

Certificate of Analysis

Compliance Test

Batch # 9-beta-oh
Batch Date: 2022-06-06
Extracted From: Industrial Hemp

Test Reg State: Oregon

Production Facility: USA
Production Date: 2022-06-06

Order Date: 2022-06-06
Sample # AACX392

Sampling Date: 2022-06-07
Lab Batch Date: 2022-06-07
Completion Date: 2022-06-10

Initial Gross Weight: 68.841 g



Product Image

Heavy Metals Passed	Mycotoxins Passed	Pesticides Passed	Additional Pesticides Passed	Residual Solvents Passed
Moisture Tested	Listeria Monocytogenes Passed	Staphylococcus Aureus Passed	Vitamin E Tested	

Potency Panel Not Included

Heavy Metals

Specimen Weight: 249.670 mg

Dilution Factor: 200

Analyte	LOQ (ppb)	Action Level (ppb)	Result (ppb)	Analyte	LOQ (ppb)	Action Level (ppb)	Result (ppb)
Arsenic (As)	100	1500	<LOQ	Lead (Pb)	100	500	<LOQ
Cadmium (Cd)	100	500	<LOQ	Mercury (Hg)	100	3000	<LOQ

Passed

SOP13.048 (ICP-MS)

Mycotoxins

Specimen Weight: 254.900 mg

Dilution Factor: 5.885

Analyte	LOQ (ppb)	Action Level (ppb)	Result (ppb)	Analyte	LOQ (ppb)	Action Level (ppb)	Result (ppb)
Aflatoxin B1	6	20	<LOQ	Aflatoxin G2	6	20	<LOQ
Aflatoxin B2	6	20	<LOQ	Ochratoxin A	12	20	<LOQ
Aflatoxin G1	6	20	<LOQ				

Passed

SOP13.007 (LCMS)

Moisture

Specimen Weight: N/A Dilution Factor: 1.000

Analyte	Action Level (%)	Result (%)
Moisture	15	1.370

Tested

SOP13.015 (Moisture Meter)

Staphylococcus Aureus

Specimen Weight: 245.200 mg

Dilution Factor: 1.000

Analyte	Result
Staphylococcus aureus	Absence

Passed

SOP13.010 (qPCR)

Xueli Gao
Xueli Gao Lab Toxicologist
Ph.D., DABT

Aixia Sun
Aixia Sun Lab Director/Principal Scientist
D.H.Sc., M.Sc., B.Sc., MT (AAB)



Definitions and Abbreviations used in this report: Total CBD = CBD + (CBD-A * 0.877), *Total CBDV = CBDV + (CBDVA * 0.87), Total THC = THCA-A * 0.877 + Delta 9 THC, Total THCV = THCV + (THCVA * 0.87), CBG Total = (CBGA * 0.877) + CBG, CBN Total = (CBNA * 0.877) + CBN, Total CBC = CBC + (CBCA * 0.877), Total THC-O-Acetate = Delta 8 THC-O-Acetate + Delta 9 THC-O-Acetate, Other Cannabinoids Total = Total Cannabinoids - All the listed cannabinoids on the summary section, Total Detected Cannabinoids = Delta6a10a-THC + Delta8-THC + Total CBN + CBT + Delta8-THCV + Total CBG + Total CBD + Total THCV + CBL + Total THC + Total CBC + Total CBDV + Delta10-THC + Total THC-O-Acetate, Analyte Details above show the Dry Weight Concentrations unless specified as 12% moisture concentration. (mg/ml) = Milligrams per Milliliter, LOQ = Limit of Quantitation, LOD = Limit of Detection, Dilution = Dilution Factor (ppb) = Parts per Billion, (%) = Percent, (cfu/g) = Colony Forming Unit per Gram (cfu/g) = Colony Forming Unit per Gram, , LOD = Limit of Detection, (µg/g) = Microgram per Gram (ppm) = Parts per Million, (ppm) = (µg/g), (aw) = aw (area ratio) = Area Ratio, (mg/Kg) = Milligram per Kilogram

This report shall not be reproduced, without written approval, from ACS Laboratory. The results of this report relate only to the material or product analyzed. Test results are confidential unless explicitly waived otherwise. Accredited by a third-party accrediting body as a competent testing laboratory pursuant to ISO/IEC 17025 of the International Organization for Standardization.

DEA No. RA0571996
FL License # CMTL-0003
CLIA No. 10D1094068

Certificate of Analysis

Compliance Test

Batch # 9-beta-oh
Batch Date: 2022-06-06
Extracted From: Industrial Hemp

Test Reg State: Oregon

Production Facility: USA
Production Date: 2022-06-06

Order Date: 2022-06-06
Sample # AACX392

Sampling Date: 2022-06-07
Lab Batch Date: 2022-06-07
Completion Date: 2022-06-10

Initial Gross Weight: 68.841 g

Pesticides **Passed**
Specimen Weight: 254.900 mg SOP13.039 (GCMS)

Dilution Factor: 5.885

Analyte	LOQ (ppb)	Action Level (ppb)	Result (ppb)	Analyte	LOQ (ppb)	Action Level (ppb)	Result (ppb)
Abamectin	28.23	300	<LOQ	Imazalil	30	100	<LOQ
Acephate	30	3000	<LOQ	Imidacloprid	30	3000	<LOQ
Acequinocyl	48	2000	<LOQ	Kresoxim Methyl	30	1000	<LOQ
Acetamiprid	30	3000	<LOQ	Malathion	30	2000	<LOQ
Aldicarb	30	100	<LOQ	Metalaxyl	10	3000	<LOQ
Azoxystrobin	10	3000	<LOQ	Methiocarb	30	100	<LOQ
Bifenazate	30	3000	<LOQ	Methomyl	30	100	<LOQ
Bifenthrin	30	500	<LOQ	Mevinphos	30	100	<LOQ
Carbaryl	10	500	<LOQ	Myclobutanil	30	3000	<LOQ
Chlorfenapyr	48	100	<LOQ	Naled	30	500	<LOQ
Chlorpyrifos	30	100	<LOQ	Oxamyl	30	500	<LOQ
Clofentazine	30	500	<LOQ	Pacllobutrazol	30	100	<LOQ
Coumaphos	30	100	<LOQ	Parathion-methyl	48	100	<LOQ
Cyfluthrin	30	1000	<LOQ	Pentachloronitro benzene	30	200	<LOQ
Cypermethrin	30	1000	<LOQ	Permethrin	30	1000	<LOQ
Daminozide	30	100	<LOQ	Phosmet	30	200	<LOQ
Diazinon	30	200	<LOQ	Piperonylbutoxid e	30	3000	<LOQ
Dichlorvos	30	100	<LOQ	Prallethrin	30	400	<LOQ
Dimethoate	30	100	<LOQ	Propiconazole	30	100	<LOQ
Dimethomorph	30	3000	<LOQ	Propoxur	30	1000	<LOQ
Ethoprofos	30	100	<LOQ	Pyrethrins	30	1000	<LOQ
Etofenprox	30	100	<LOQ	Pyridaben	30	3000	<LOQ
Etoxazole	30	1500	<LOQ	Spinetoram	30	3000	<LOQ
Fenhexamid	30	3000	<LOQ	Spiromesifen	30	3000	<LOQ
Fenoxycarb	30	100	<LOQ	Spirotetramat	30	3000	<LOQ
Fenpyroximate	30	2000	<LOQ	Spiroxamine	30	100	<LOQ
Fipronil	30	100	<LOQ	Tebuconazole	30	1000	<LOQ
Flonicamid	30	2000	<LOQ	Thiacloprid	30	100	<LOQ
Fludioxonil	30	3000	<LOQ	Thiamethoxam	30	1000	<LOQ
Hexythiazox	30	2000	<LOQ	Trifloxystrobin	30	3000	<LOQ

Residual Solvents - FL (CBD) **Passed**
Specimen Weight: 12.000 mg SOP13.039 (GCMS)

Dilution Factor: 500.000

Analyte	LOQ (ppm)	Action Level (ppm)	Result (ppm)	Analyte	LOQ (ppm)	Action Level (ppm)	Result (ppm)
1,1-Dichloroetha ne	0.16	8	<LOQ	Heptane	1.39	5000	<LOQ
1,2-Dichloroetha ne	0.04	5	<LOQ	Hexane	1.17	290	<LOQ
Acetone	2.08	5000	<LOQ	Isopropyl alcoho l	1.39	500	<LOQ
Acetonitrile	1.17	410	<LOQ	Methanol	0.69	3000	<LOQ
Benzene	0.02	2	<LOQ	Methylene chlori de	2.43	600	<LOQ
Butanes	2.5	2000	<LOQ	Pentane	2.08	5000	<LOQ
Chloroform	0.04	60	<LOQ	Propane	5.83	2100	<LOQ
Ethanol	2.78	5000	<LOQ	Toluene	2.92	890	<LOQ
Ethyl Acetate	1.11	5000	<LOQ	Total Xylenes	2.92	2170	<LOQ
Ethyl Ether	1.39	5000	<LOQ	Trichloroethylen e	0.49	80	<LOQ
Ethylene Oxide	0.1	5	<LOQ				

Listeria Monocytogenes **Passed**
Specimen Weight: 1009.700 mg SOP13.007 (LCMS)

Dilution Factor: 1.000

Analyte	Action Level (cfu/g)	Result
Listeria Monocyt ogenes	1	Absence in 1g

Additional Pesticides **Passed**
Specimen Weight: 254.900 mg SOP13.007 (LCMS)

Dilution Factor: 5.885

Analyte	LOQ (ppb)	Result (ppb)	Analyte	LOQ (ppb)	Result (ppb)
Diquat	24	<LOQ	Paraquat	24	<LOQ
Glyphosate	24	<LOQ			

Vitamin E (Tocopheryl Acetate) **Tested**
Specimen Weight: 254.900 mg SOP13.007 (LC-MS)

Dilution Factor: 5.885

Analyte	Result (ppb)
Vitamin E Acetat e	<LOQ

Xueli Gao
Xueli Gao Lab Toxicologist
Ph.D., DABT

Aixia Sun
Aixia Sun Lab Director/Principal Scientist
D.H.Sc., M.Sc., B.Sc., MT (AAB)

Definitions and Abbreviations used in this report: Total CBD = CBD + (CBD-A * 0.877), *Total CBDV = CBDV + (CBDVA * 0.87), Total THC = THCA-A * 0.877 + Delta 9 THC, Total THCV = THCV + (THCVA * 0.87), CBG Total = (CBGA * 0.877) + CBG, CBN Total = (CBNA * 0.877) + CBN, Total CBC = CBC + (CBCA * 0.877), Total THC-O-Acetate = Delta 8 THC-O-Acetate + Delta 9 THC-O-Acetate, Other Cannabinoids Total = Total Cannabinoids - All the listed cannabinoids on the summary section, Total Detected Cannabinoids = Delta6a10a-THC + Delta8-THC + Total CBN + CBT + Delta8-THCV + Total CBG + Total CBD + Total THCV + CBL + Total THC + Total CBC + Total CBDV + Delta10-THC + Total THC-O-Acetate, Analyte Details above show the Dry Weight Concentrations unless specified as 12% moisture concentration. (mg/ml) = Milligrams per Milliliter, LOQ = Limit of Quantitation, LOD = Limit of Detection, Dilution = Dilution Factor (ppb) = Parts per Billion, (%) = Percent, (cfu/g) = Colony Forming Unit per Gram (cfu/g) = Colony Forming Unit per Gram, , LOD = Limit of Detection, (µg/g) = Microgram per Gram (ppm) = Parts per Million, (ppm) = (µg/g), (aw) = aw (area ratio) = Area Ratio, (mg/Kg) = Milligram per Kilogram

This report shall not be reproduced, without written approval, from ACS Laboratory. The results of this report relate only to the material or product analyzed. Test results are confidential unless explicitly waived otherwise. Accredited by a third-party accrediting body as a competent testing laboratory pursuant to ISO/IEC 17025 of the International Organization for Standardization.



```

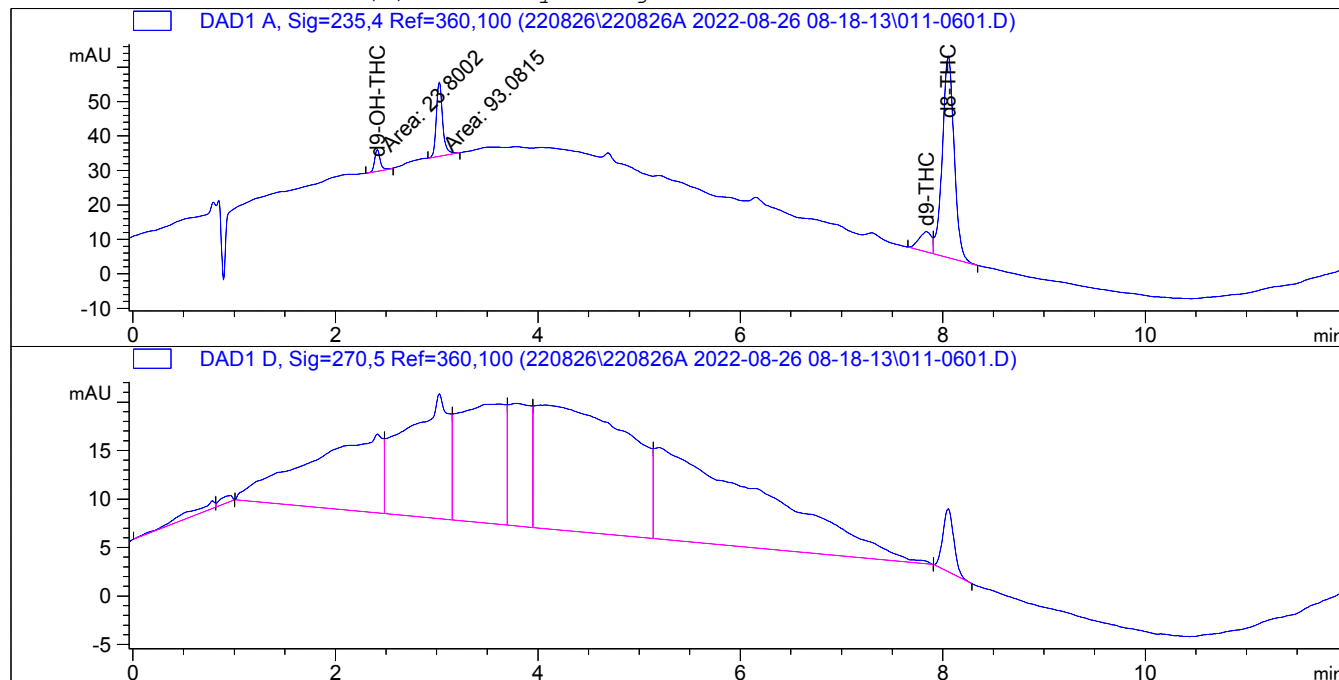
=====
Acq. Operator   :                               Seq. Line :    6
Acq. Instrument : Instrument 1                   Location  : Vial 11
Injection Date  : 8/26/2022 9:39:04 AM         Inj       :    1
                                                    Inj Volume: 2.0 µl

Acq. Method     : C:\CHEM32\1\DATA\220826\220826A 2022-08-26 08-18-13\APL-24E21-SPEC_A.M
Last changed    : 8/26/2022 9:26:02 AM
                  (modified after loading)

Analysis Method : C:\CHEM32\1\METHODS\APL-21D22-OFFLINE.M
Last changed    : 8/26/2022 9:57:22 AM
                  (modified after loading)

Method Info     : Cannabinoid Method
  
```

Additional Info : Peak(s) manually integrated



ESTD Percent Report

```

Sorted By       : Signal
Calib. Data Modified : 8/26/2022 9:57:40 AM
Multiplier:     : 1.0000
Dilution:      : 1.0000
Sample Amount:  : 209.33850 [ng/ul]
Use Multiplier & Dilution Factor with ISTDs
  
```

Signal 1: DAD1 A, Sig=235,4 Ref=360,100

RetTime [min]	Type	Area [mAU*s]	Amt/Area	Amount %	Grp	Name
1.800		-	-	-		OBT299
2.413	MM	23.80016	2.83405	32.220915		d9-OH-THC
2.550		-	-	-		CBDV
3.250		-	-	-		CBD-A
3.600		-	-	-		CBG-A
3.900		-	-	-		CBG
4.100		-	-	-		CBD
4.330		-	-	-		d9-THCV

RetTime [min]	Type	Area [mAU*s]	Amt/Area	Amount %	Grp	Name
4.500		-	-	-		d8-THCV
5.500		-	-	-		CBDH
6.150		-	-	-		CBN
6.600		-	-	-		CMCBDv
7.350		-	-	-		CBDP
7.839	BV	50.81136	2.36835e-1	5.748547		d9-THC
8.054	VB	473.98288	2.69364e-1	60.989260		d8-THC
9.450		-	-	-		9S-HHC
9.900		-	-	-		9R-HHC
10.000		-	-	-		(6aR, 9R)-d10-THC
10.500		-	-	-		CBC
15.800		-	-	-		d9-THC-OAc
16.050		-	-	-		d9THCP
16.700		-	-	-		d8THCP
17.850		-	-	-		d8-THC-OAc
21.000		-	-	-		THC-A - moved
22.900		-	-	-		MCBDP

Totals : 98.958722

2 Warnings or Errors :

Warning : Calibration warnings (see calibration table listing)

Warning : Calibrated compound(s) not found

=====
*** End of Report ***